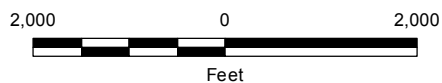


FIGURE 1
United Illuminating English Station Power Plant
510 Grand Avenue, New Haven, Connecticut

SITE LOCUS



\\wse03.local\\WSE\\Projects\\CT\\RockyHill\\Server\\Avangrid\\New Haven\\English Station\\CAD Files\\Updated WSE Formatted Files\\North and Southside Figures 2, 3 REV 12.22.17.dwg



NOTES:

1. REVISION 4 INCLUDES A PROPERTY LINE ADJUSTMENT BASED ON THE 11/28/16 SURVEY BY GODFREY-HOFFMAN & ASSOC.
2. ADAPTED FROM PLAN TITLED "SITE PLAN AND APPROXIMATE PARCEL BOUNDARIES" DATED 10/07/2016 BY TRC COMPANIES, INC..
3. AERIAL IMAGE FROM GOOGLE EARTH PRO, DATE OF IMAGE: 04/20/2016

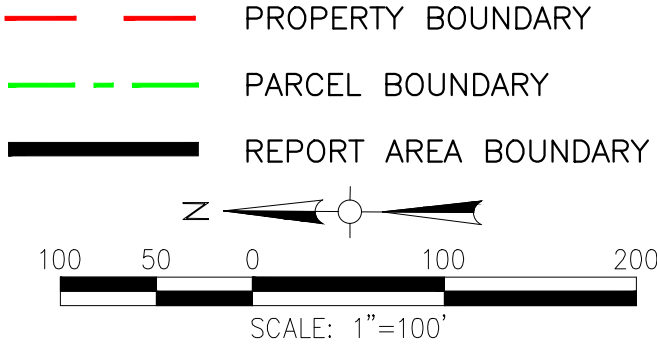
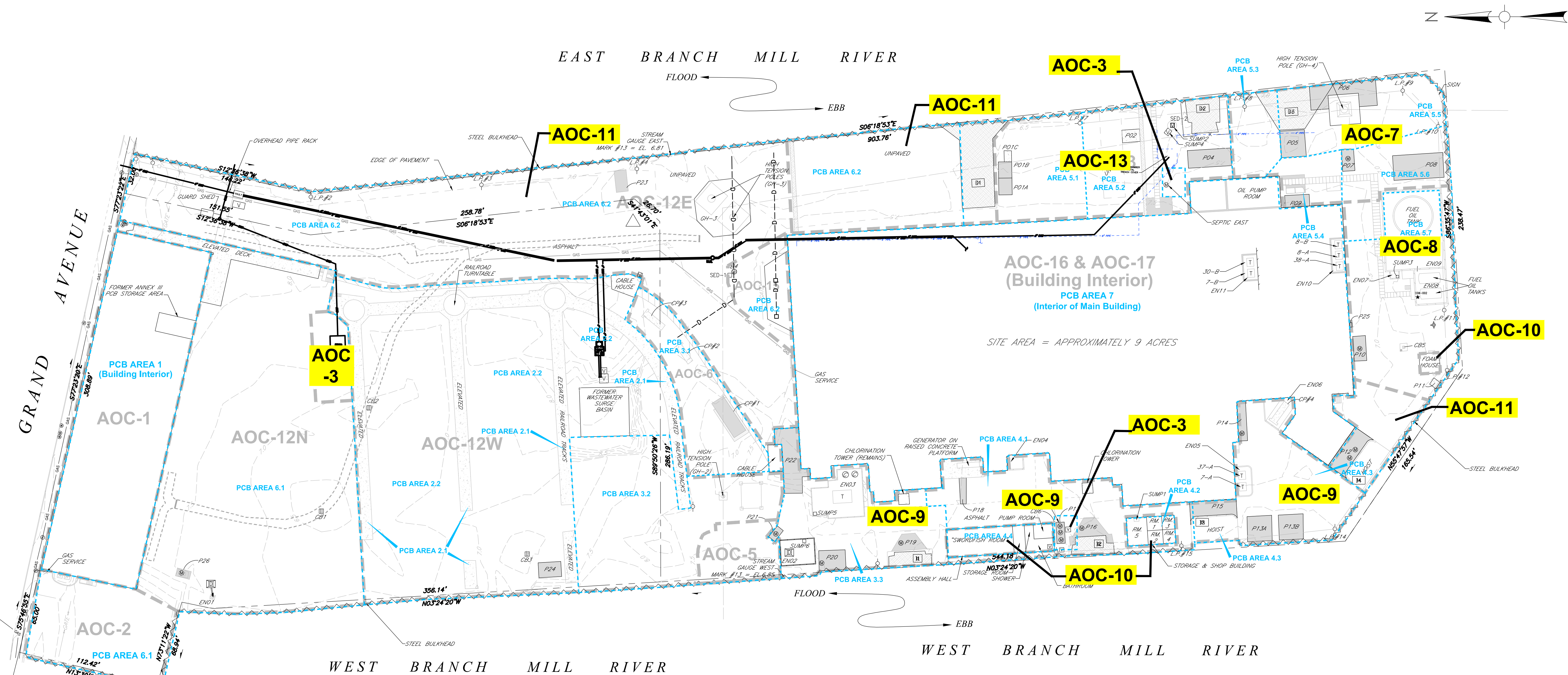


FIGURE 2		
UNITED ILLUMINATING ENGLISH STATION POWER PLANT 510 GRAND AVENUE, NEW HAVEN, CONNECTICUT		
SITE PLAN WITH PARCEL BOUNDARY		
DESIGNED BY: PML	CHECKED BY: MB	DATE: OCTOBER 2017
Weston & Sampson SM		



AREAS OF ENVIRONMENTAL CONCERN:

- AOC-1 STATION B-BUILDING INTERIOR
- AOC-2 STATION B UNDERGROUND STORAGE TANK AREA
- AOC-3 FORMER SEPTIC SYSTEM
- AOC-4 PAST SPILLS UNSPECIFIED LOCATIONS
- AOC-5 BULKHEAD PCB REMEDIATION AREA
- AOC-6 CAPACITOR RELEASE AREA/OUTDOOR CAPACITOR BANKS
- AOC-7 FORMER WASTE OIL AST AND OIL PUMP HOUSE
- AOC-8 FORMER FUEL OIL STORAGE ASTS
- AOC-9 TRANSFORMER AREAS
- AOC-10 INTERIOR CHEMICAL STORAGE AREAS EXCLUDING ENGLISH STATION
- AOC-11 ON-SITE FILL MATERIAL SITE WIDE
- AOC-12E COAL STORAGE, HANDLING, AND WASTE DISPOSAL AREAS
- AOC-12N COAL STORAGE, HANDLING, AND WASTE DISPOSAL AREAS
- AOC-12W COAL STORAGE, HANDLING, AND WASTE DISPOSAL AREAS
- AOC-13 FORMER WASTEWATER TREATMENT FACILITY
- AOC-14 FORMER COOLING WATER DISCHARGE TUNNEL
- AOC-15 CATCH BASIN RELEASE & OIL STAIN AREA
- AOC-16 ENGLISH STATION INTERIOR
- AOC-17 DRAINAGE STRUCTURES ASSOCIATED WITH/BENEATH ENGLISH STATION

GENERAL NOTES:

- ADAPTED FROM PLAN TITLED "SITE FEATURES, AOCs, AND PCB AREAS" DATED 10/07/2016 BY TRC COMPANIES INC..
- NOT ALL STRUCTURAL DETAILS HAVE BEEN SHOWN WITHIN BUILDINGS AND ENCLOSURES.
- ENCLOSURES EN01 THROUGH EN11 ARE ENCLOSED EITHER BY FOUR CONCRETE WALLS, OR BY THREE CONCRETE WALLS AND A BUILDING WALL. ENCLOSURE IS NOT SYNONYMOUS WITH CONTAINMENT.
- FOUR CONCRETE PADS FORMERLY HELD CAPACITORS: CP#1, CP#2, CP#3, CP#4. CP#1 IS AT GRADE; THE OTHERS ARE ELEVATED.
- IN A SURVEY OF MONITORING WELLS ON 13 APRIL 2004, AEI COULD NOT FIND THE FOLLOWING WELLS, AND THEY ARE PRESUMED EXCAVATED OR OTHERWISE DESTROYED: MW-01, MW-02, MW-13, MW-20, MW-N, AND MW-O.
- GODFREY-HOFFMAN ASSOCIATES, LLC SUPPLIED A GENERAL LOCATION SURVEY BASE MAP: PROJECT 01-182; JANUARY 4, 2002 WITH REVISIONS TO NOVEMBER 28, 2016; SCALE 1 INCH = 40 FEET.
- THIS FIGURE IS NOT INTENDED FOR CONSTRUCTION PURPOSES.

PCB INVESTIGATION AREAS:

- PCB AREA 1: STATION B INTERIOR
 - AREA 1.1 MEZZANINE AND FIRST FLOOR, EXCEPT ANNEX III
 - AREA 1.2 FORMER ANNEX III
 - AREA 1.3 BASEMENT
- PCB AREA 2: FORMER COAL YARD
 - AREA 2.1 ELEVATED RAILROAD TRACKS AND FOUNDATIONS
 - AREA 2.2 REMAINDER OF FORMER COAL YARD
- PCB AREA 3: ELECTRICAL INFRASTRUCTURE AND EXCAVATION
 - AREA 3.1 FORMER CAPACITOR AREA
 - AREA 3.2 UNITED ILLUMINATING REMEDIATION AREA
 - AREA 3.3 TRANSFORMER AND CAPACITOR AREA
- PCB AREA 4: SOUTHWEST CORNER
 - AREA 4.1 FORMER TRANSFORMER AREA
 - AREA 4.2 STORAGE AND SHOP BUILDING INTERIOR
 - AREA 4.3 TRANSFORMER AND FORMER CAPACITOR AREA
 - AREA 4.4 ASSEMBLY HALL INTERIOR
- PCB AREA 5: SOUTHEAST CORNER
 - AREA 5.1 FORMER DUMPSTER AREA
 - AREA 5.2 FORMER WASTEWATER TREATMENT AREA
 - AREA 5.3 OIL PUMP HOUSE AREA
 - AREA 5.4 FORMER WASTE OIL TANK AREA
 - AREA 5.5 TOWER GH-4 AREA
 - AREA 5.6 FORMER STORAGE BUILDING AREA
 - AREA 5.7 FUEL OIL TANK AREA
- PCB AREA 6: BALANCE OF SITE, EXCEPT ENGLISH STATION
 - AREA 6.1 FORMER STATION B AREA
 - AREA 6.2 MILL RIVER EAST BRANCH AREA
- PCB AREA 7: ENGLISH STATION INTERIOR

SITE FEATURE LEGEND

---	EDGE OF PAVEMENT	⬮	FIRE HYDRANT
---	PROPERTY / STREET LINE	⊙	MANHOLE
-x-	CHAIN LINK FENCE	⌘	VAULT
---	GUARDRAIL	⌘	HATCHWAY
---	NEW BULKHEAD	⌘	INTAKE CHANNEL
---	GAS LINE	⌘	DISCHARGE CHANNEL
---	OVERHEAD WIRE	⌘	TRANSFORMER
---	CONCRETE WALL	⊙	CIRCUIT BREAKER
---	APPROXIMATE EXTENT OF HISTORICAL EXCAVATION	⌘	CATHODIC BULKHEAD PROTECTION DEVICE
---	PCB AREA BOUNDARY	4AS-007A	ASPHALT SAMPLE POINT
---	AOC BOUNDARY	300-040A	CONCRETE SAMPLE POINT
---	PIPE TRENCH	CS-1A	CONCRETE SAMPLE POINT - COLLECTED BY GEI
---	EXISTING BUILDING	400-078A	CONCRETE SAMPLE POINT FROM WALL
---	CONCRETE PAD	3HX-004	HEXANE WIPE SAMPLE POINT
---	CONCRETE PAD (ELEVATED)	40X-001X	MISCELLANEOUS SAMPLE POINT
---	ASPHALT APRON	3SD-001H	SEDIMENT SAMPLE POINT
---	RECENT FILL	PCB-005D	SEDIMENT SAMPLE POINT - COLLECTED BY GEI
●	WATER GATE	4HA-513	SOIL SAMPLE POINT
●	GAS GATE	TB-100K	SAMPLE LOCATION WHERE BOTH POROUS MEDIA (ASPHALT OR CONCRETE) AND SOIL SAMPLES WERE COLLECTED
●	ROUND CATCH BASIN	HA-1O	SOIL SAMPLE POINT - COLLECTED BY OTHERS
⌘	RECTANGULAR CATCH BASIN	3SW-001	SURFACE WATER SAMPLE POINT
⊙	UTILITY POLE	MW-H	SOIL SAMPLE FROM GROUND WATER MONITORING WELL
		WB-W	SOIL SAMPLE FROM GROUND WATER MONITORING WELL - INSTALLED BY OTHERS

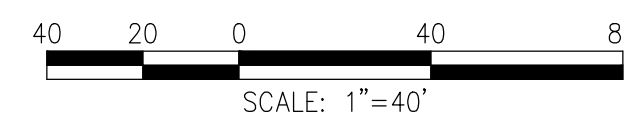


FIGURE 3
UNITED ILLUMINATING ENGLISH STATION POWER PLANT

510 GRAND AVENUE, NEW HAVEN, CONNECTICUT

SOUTHSIDE SITE FEATURES,
AOCs, AND PCB AREAS

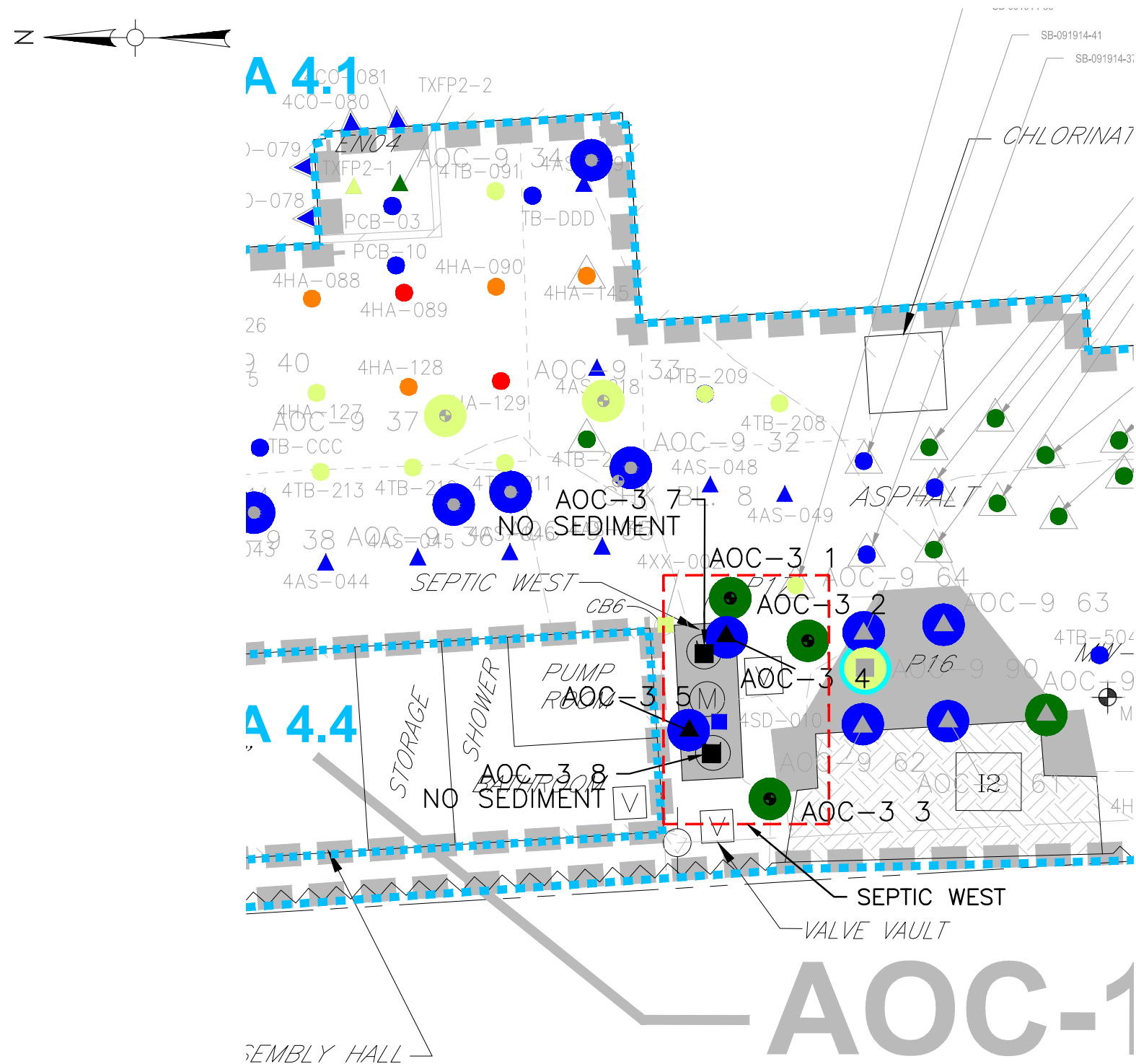
OCTOBER, 2017

SCALE: 1" = 40'

Weston & Sampson

Weston & Sampson Engineers, Inc.
273 Dividend Road, Rocky Hill, CT 06067

\\wse03.local\WSE\Projects\CT\RockyHill\Server\Avangrid\New Haven\English Station\CAD Files\Updated WSE Formatted Files\Southside Figures (with AOC-6, AOC-15) REV 11.20.17.dwg



LEGEND:

- SAMPLE LOCATION WITH PCB CONCENTRATIONS < 1.0 MG/KG
- SAMPLE LOCATION WITH NON-DETECT PCB CONCENTRATIONS
- SAMPLE LOCATION WITH TPH/ETPH CONCENTRATIONS > I/C DEC
- SAMPLE LOCATION WITH TPH/ETPH CONCENTRATIONS < I/C DEC
- SAMPLE LOCATION WITH PCB CONCENTRATIONS ≥ 50.0 MG/KG
- SAMPLE LOCATION WITH PCB CONCENTRATIONS ≥ 10.0 MG/KG, BUT < 50.0 MG/KG
- SAMPLE LOCATION WITH PCB CONCENTRATIONS ≥ 1.0 MG/KG, BUT < 10.0 MG/KG
- SEDIMENT SAMPLE LOCATION
- ▲ POROUS MEDIA SAMPLE LOCATION
- W&S 2017 BORING/SOIL SAMPLE LOCATION
- W&S 2017 BORING/SOIL AND POROUS MEDIA SAMPLE LOCATION

NOTES:

- SEE FIGURE 3 FOR NOTES, LEGEND AND LOCATION.
- SHADED DATA POINTS REPRESENT HISTORICAL SAMPLE POINTS AND/OR SAMPLE LOCATIONS OUTSIDE OF FIGURE'S AOC.
- HISTORICAL SAMPLE POINTS WHERE DETECTIONS/ EXCEEDANCES OCCURRED ARE HIGHLIGHTED. NO SAMPLE SYMBOL IS USED.

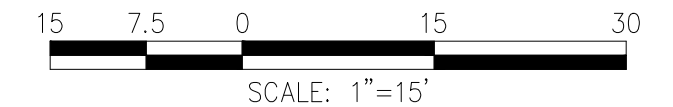
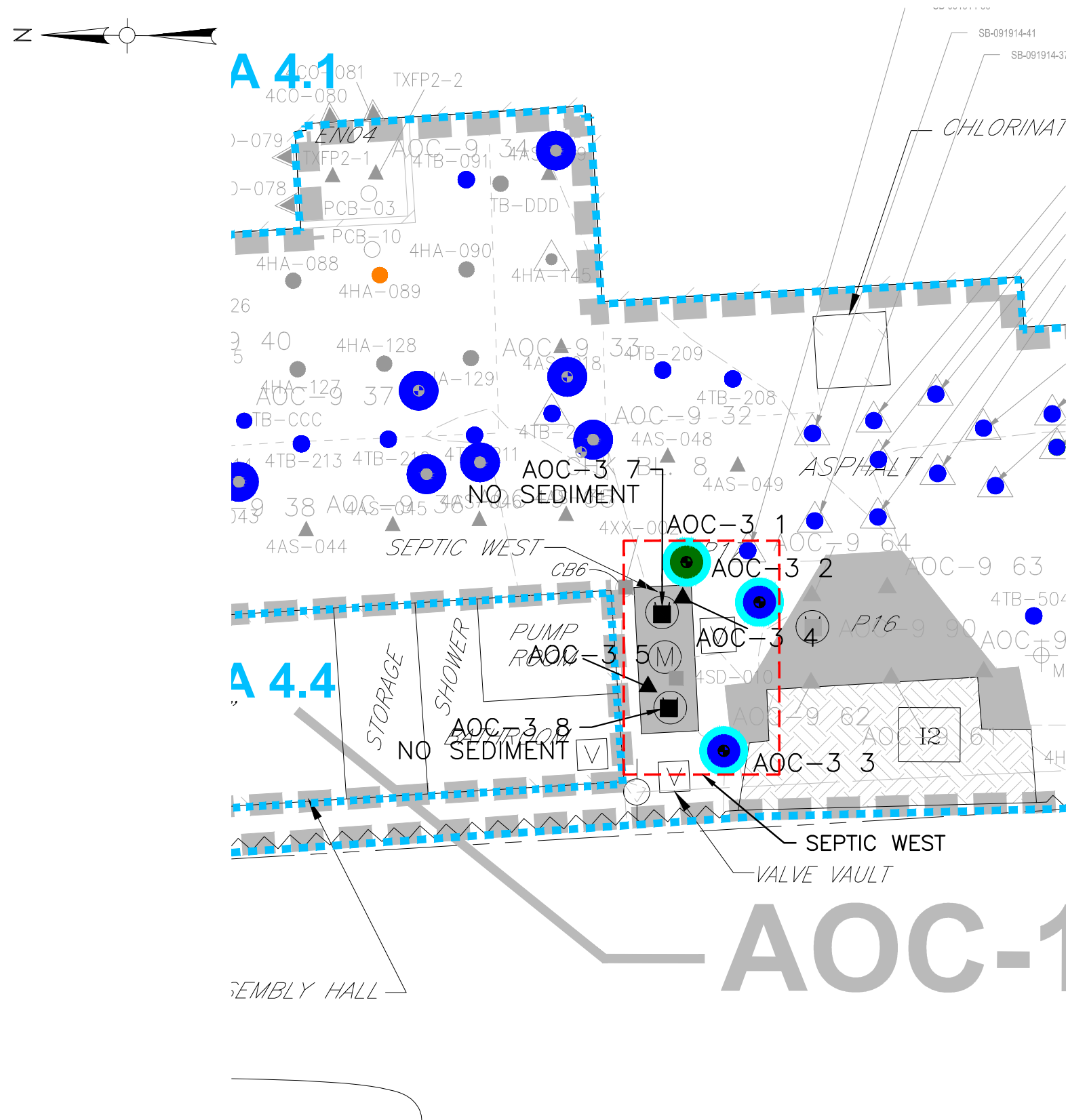


FIGURE 4-1		
UNITED ILLUMINATING ENGLISH STATION POWER PLANT 510 GRAND AVENUE, NEW HAVEN, CONNECTICUT		
AOC-3 (SEPTIC WEST) 2017 SAMPLE LOCATIONS: 0-2 FEET DEPTH		
DESIGNED BY: PML	CHECKED BY: MB	DATE: OCTOBER 2017
Weston & Sampson SM		

\\wse03.local\WSE\Projects\CT\RockyHill\Server\Avangrid\New Haven\English Station\CAD Files\Updated WSE Formatted Files\Southside Figures (with AOC-6, AOC-15) REV 11.20.17.dwg



LEGEND:

- SAMPLE LOCATION WITH PCB CONCENTRATIONS < 1.0 MG/KG
- SAMPLE LOCATION WITH NON-DETECT PCB CONCENTRATIONS
- SAMPLE LOCATION WITH TPH/ETPH CONCENTRATIONS > I/C DEC
- SAMPLE LOCATION WITH TPH/ETPH CONCENTRATIONS < I/C DEC
- SAMPLE LOCATION WITH PCB CONCENTRATIONS ≥ 50.0 MG/KG
- SAMPLE LOCATION WITH PCB CONCENTRATIONS ≥ 10.0 MG/KG, BUT < 50.0 MG/KG
- SAMPLE LOCATION WITH PCB CONCENTRATIONS ≥ 1.0 MG/KG, BUT < 10.0 MG/KG
- SEDIMENT SAMPLE LOCATION
- ▲ POROUS MEDIA SAMPLE LOCATION
- W&S 2017 BORING/SOIL SAMPLE LOCATION
- W&S 2017 BORING/SOIL AND POROUS MEDIA SAMPLE LOCATION

NOTES:

- SEE FIGURE 3 FOR NOTES, LEGEND AND LOCATION.
- SHADED DATA POINTS REPRESENT HISTORICAL SAMPLE POINTS AND/OR SAMPLE LOCATIONS OUTSIDE OF FIGURE'S AOC.
- HISTORICAL SAMPLE POINTS WHERE DETECTIONS/ EXCEEDANCES OCCURRED ARE HIGHLIGHTED. NO SAMPLE SYMBOL IS USED.

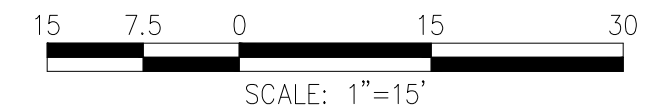














FIGURE 4-2		
UNITED ILLUMINATING ENGLISH STATION POWER PLANT 510 GRAND AVENUE, NEW HAVEN, CONNECTICUT		
AOC-3 (SEPTIC WEST) 2017 SAMPLE LOCATIONS: 2-4 FOOT DEPTH		
DESIGNED BY: PML	CHECKED BY: MB	DATE: OCTOBER 2017
Weston & Sampson SM		

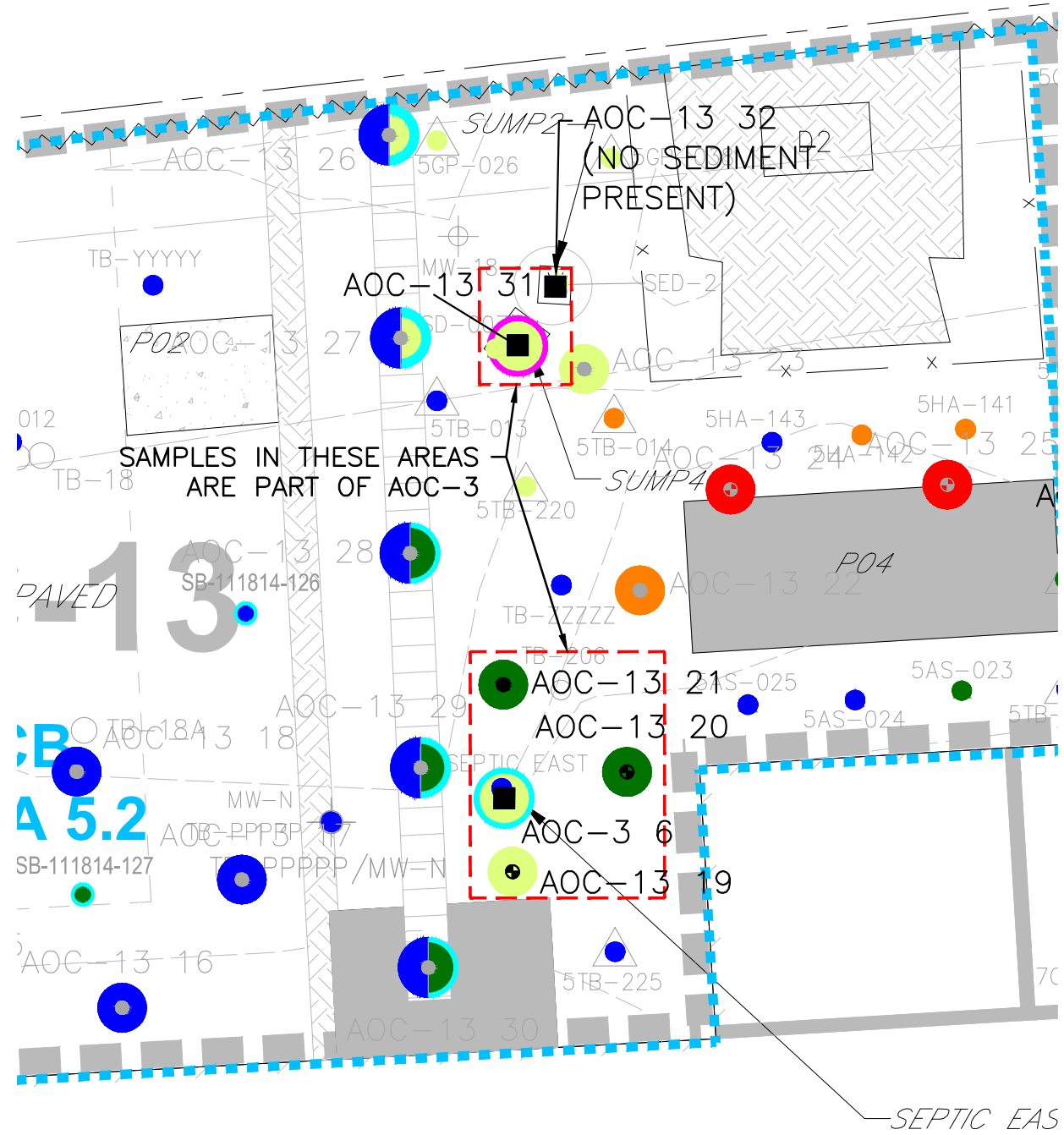
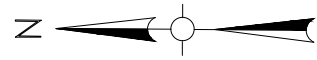
-  SAMPLE LOCATION WITH PCB CONCENTRATIONS < 1.0 MG/KG
-  SAMPLE LOCATION WITH NON-DETECT PCB CONCENTRATIONS
-  SAMPLE LOCATION WITH TPH/ETPH CONCENTRATIONS > 1/C DEC
-  SAMPLE LOCATION WITH TPH/ETPH CONCENTRATIONS < 1/C DEC
-  SAMPLE LOCATION WITH PCB CONCENTRATIONS \geq 50.0 MG/KG
-  SAMPLE LOCATION WITH PCB CONCENTRATIONS \geq 10.0 MG/KG, BUT < 50.0 MG/KG
-  SAMPLE LOCATION WITH PCB CONCENTRATIONS \geq 1.0 MG/KG, BUT < 10.0 MG/KG
-  SEDIMENT SAMPLE LOCATION
-  POROUS MEDIA SAMPLE LOCATION
-  W&S 2017 BORING/SOIL SAMPLE LOCATION
-  W&S 2017 BORING/SOIL AND POROUS MEDIA SAMPLE LOCATION

1. SEE FIGURE 3 FOR NOTES, LEGEND AND LOCATION.
2. SHADED DATA POINTS REPRESENT HISTORICAL SAMPLE POINTS AND/OR SAMPLE LOCATIONS OUTSIDE OF FIGURE'S AOC.
3. HISTORICAL SAMPLE POINTS WHERE DETECTIONS/ EXCEEDANCES OCCURRED ARE HIGHLIGHTED. NO SAMPLE SYMBOL IS USED.



FIGURE 4-3		
UNITED ILLUMINATING ENGLISH STATION POWER PLANT 510 GRAND AVENUE, NEW HAVEN, CONNECTICUT		
AOC-3 (SEPTIC WEST) 2017 SAMPLE LOCATIONS: > 4 FOOT DEPTH		
DESIGNED BY: PML	CHECKED BY: MB	DATE: OCTOBER 2017
		

\\wse03.local\WSE\Projects\CT\Rockyhill\Server\Avangrid\New Haven\English Station\CAD Files\Updated WSE Formatted Files\Southside Figures (with AOC-6, AOC-15) REV 11.20.17.dwg



- NOTES:
1. SEE FIGURE 3 FOR NOTES, LEGEND AND LOCATION.
 2. SHADED DATA POINTS REPRESENT HISTORICAL SAMPLE POINTS AND/OR SAMPLE LOCATIONS OUTSIDE OF FIGURE'S AOC.
 3. HISTORICAL SAMPLE POINTS WHERE DETECTIONS/ EXCEEDANCES OCCURRED ARE HIGHLIGHTED. NO SAMPLE SYMBOL IS USED.

- LEGEND:
- SAMPLE LOCATION WITH PCB CONCENTRATIONS < 1.0 MG/KG
 - SAMPLE LOCATION WITH NON-DETECT PCB CONCENTRATIONS
 - SAMPLE LOCATION WITH TPH/ETPH CONCENTRATIONS > 1/C DEC
 - SAMPLE LOCATION WITH TPH/ETPH CONCENTRATIONS < 1/C DEC
 - SAMPLE LOCATION WITH PCB CONCENTRATIONS ≥ 50.0 MG/KG
 - SAMPLE LOCATION WITH PCB CONCENTRATIONS ≥ 10.0 MG/KG, BUT < 50.0 MG/KG
 - SAMPLE LOCATION WITH PCB CONCENTRATIONS ≥ 1.0 MG/KG, BUT < 10.0 MG/KG
 - SEDIMENT SAMPLE LOCATION
 - POROUS MEDIA SAMPLE LOCATION
 - W&S 2017 BORING/SOIL SAMPLE LOCATION
 - W&S 2017 BORING/SOIL AND POROUS MEDIA SAMPLE LOCATION
 - W&S 2017 POROUS MEDIA/ SEDIMENT SAMPLE. LEFT SIDE REPRESENTS POROUS MEDIA, RIGHT SIDE REPRESENTS SEDIMENT.

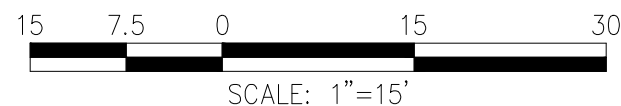


FIGURE 5-1

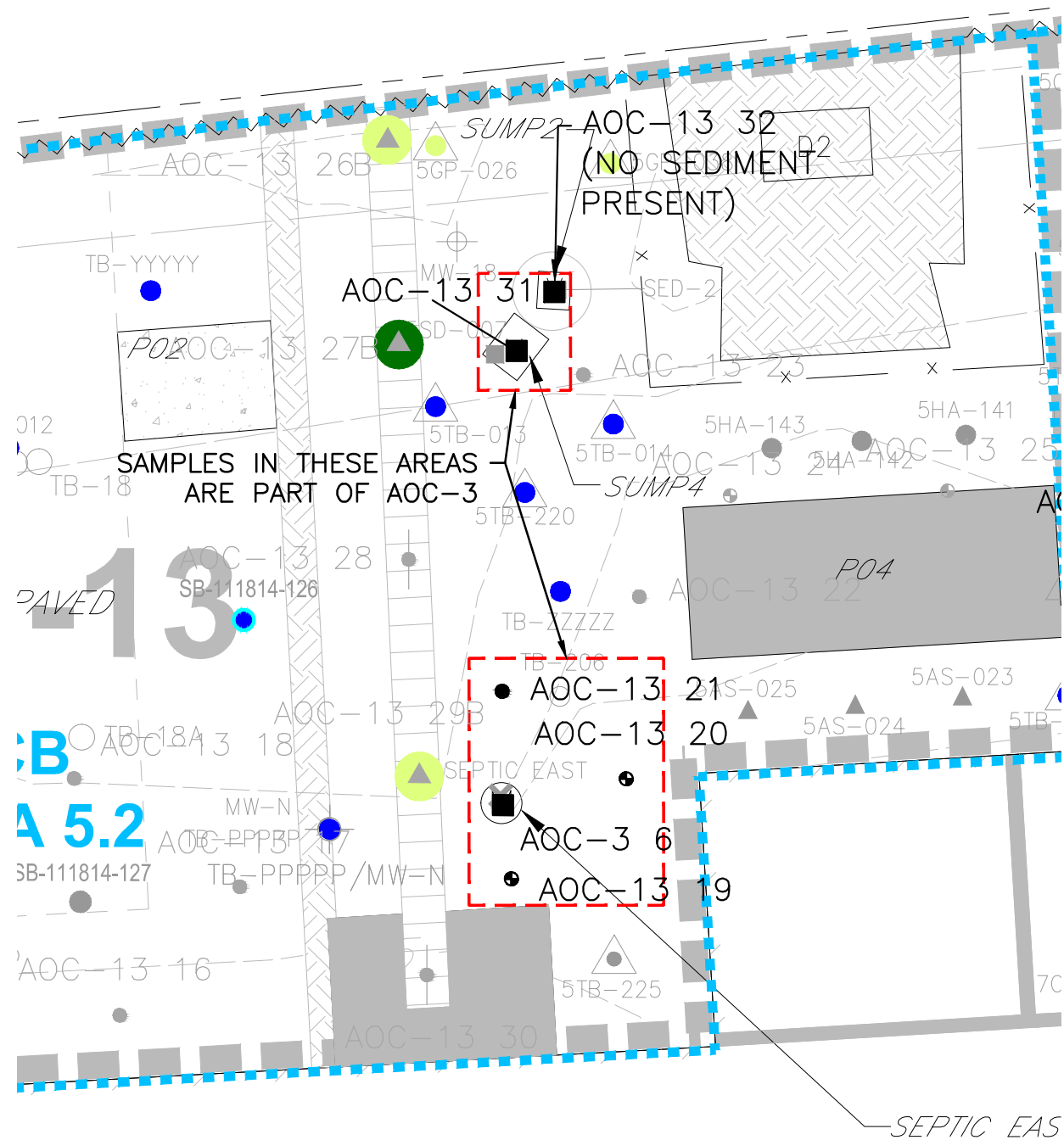
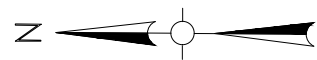
UNITED ILLUMINATING ENGLISH STATION POWER PLANT
510 GRAND AVENUE, NEW HAVEN, CONNECTICUT

AOC-3 (SEPTIC EAST)
2017 SAMPLE LOCATIONS: 0-2 FOOT DEPTH

DESIGNED BY: PML | CHECKED BY: MB | DATE: OCTOBER 2017

Weston & SampsonSM

\\wse03.local\WSE\Projects\CT\Rockyhill\Server\Avangrid\New Haven\English Station\CAD Files\Updated WSE Formatted Files\Southside Figures (with AOC-6, AOC-15) REV 11.20.17.dwg



- NOTES:
1. SEE FIGURE 3 FOR NOTES, LEGEND AND LOCATION.
 2. SHADED DATA POINTS REPRESENT HISTORICAL SAMPLE POINTS AND/OR SAMPLE LOCATIONS OUTSIDE OF FIGURE'S AOC.
 3. HISTORICAL SAMPLE POINTS WHERE DETECTIONS/ EXCEEDANCES OCCURRED ARE HIGHLIGHTED. NO SAMPLE SYMBOL IS USED.

- LEGEND:
- SAMPLE LOCATION WITH PCB CONCENTRATIONS < 1.0 MG/KG
 - SAMPLE LOCATION WITH NON-DETECT PCB CONCENTRATIONS
 - SAMPLE LOCATION WITH TPH/ETPH CONCENTRATIONS > 1/C DEC
 - SAMPLE LOCATION WITH TPH/ETPH CONCENTRATIONS < 1/C DEC
 - SAMPLE LOCATION WITH PCB CONCENTRATIONS ≥ 50.0 MG/KG
 - SAMPLE LOCATION WITH PCB CONCENTRATIONS ≥ 10.0 MG/KG, BUT < 50.0 MG/KG
 - SAMPLE LOCATION WITH PCB CONCENTRATIONS ≥ 1.0 MG/KG, BUT < 10.0 MG/KG
 - SEDIMENT SAMPLE LOCATION
 - POROUS MEDIA SAMPLE LOCATION
 - W&S 2017 BORING/SOIL SAMPLE LOCATION
 - W&S 2017 BORING/SOIL AND POROUS MEDIA SAMPLE LOCATION
 - W&S 2017 POROUS MEDIA/ SEDIMENT SAMPLE. LEFT SIDE REPRESENTS POROUS MEDIA, RIGHT SIDE REPRESENTS SEDIMENT.

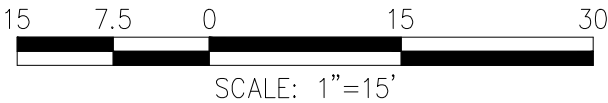
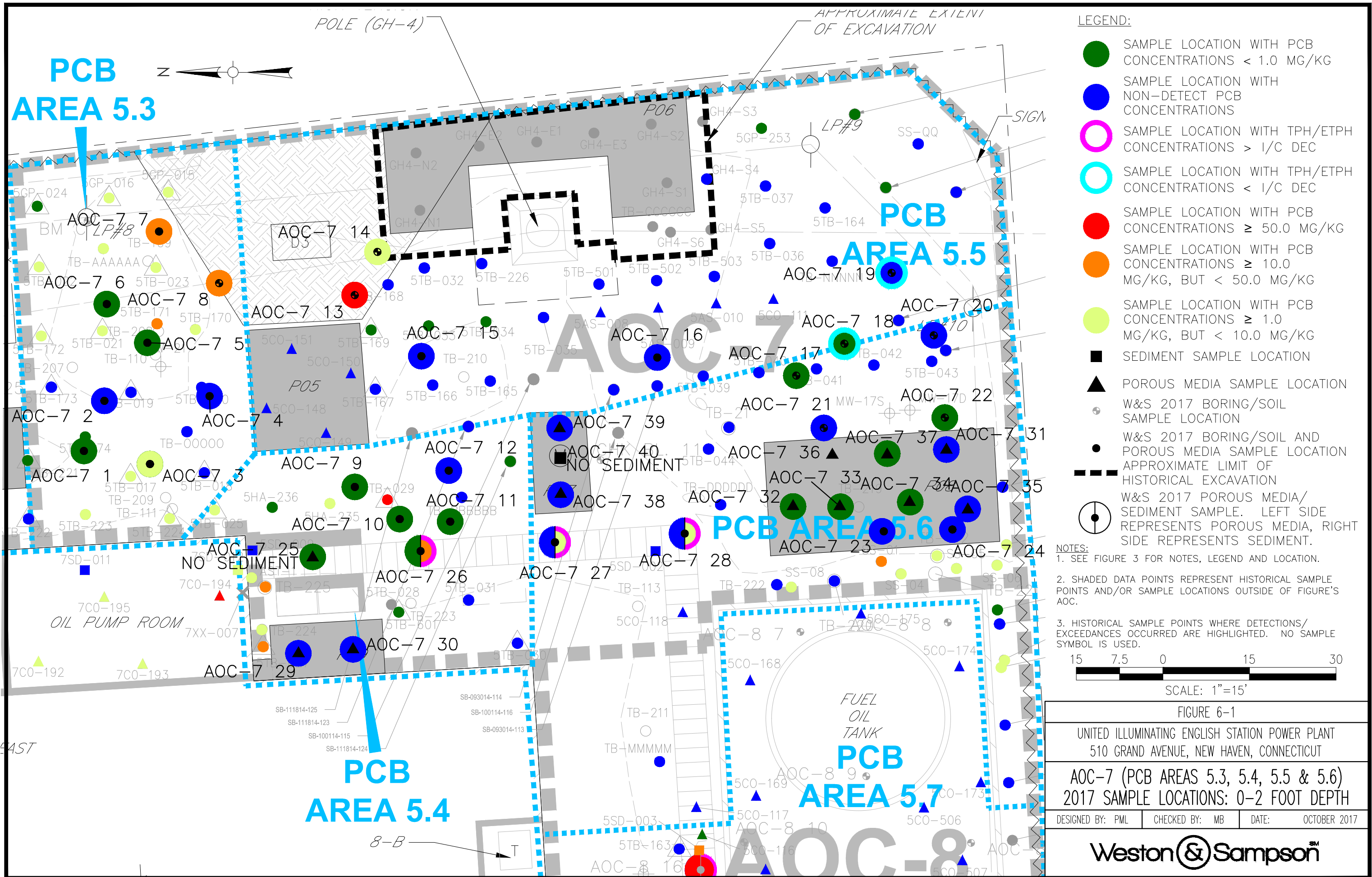


FIGURE 5-2		
UNITED ILLUMINATING ENGLISH STATION POWER PLANT 510 GRAND AVENUE, NEW HAVEN, CONNECTICUT		
AOC-3 (SEPTIC EAST) 2017 SAMPLE LOCATIONS: 2-4 FOOT DEPTH		
DESIGNED BY: PML	CHECKED BY: MB	DATE: OCTOBER 2017
Weston & Sampson SM		

\\wse03.local\WSE\Projects\CT_RockyHillOldServer\Avangrid\New Haven\English Station\CAD Files\Updated WSE Formatted Files\English Station COMBINED Figures 12.19.17.dwg



LEGEND:

- SAMPLE LOCATION WITH PCB CONCENTRATIONS < 1.0 MG/KG
- SAMPLE LOCATION WITH NON-DETECT PCB CONCENTRATIONS
- SAMPLE LOCATION WITH TPH/ETPH CONCENTRATIONS > 1/C DEC
- SAMPLE LOCATION WITH TPH/ETPH CONCENTRATIONS < 1/C DEC
- SAMPLE LOCATION WITH PCB CONCENTRATIONS ≥ 50.0 MG/KG
- SAMPLE LOCATION WITH PCB CONCENTRATIONS ≥ 10.0 MG/KG, BUT < 50.0 MG/KG
- SAMPLE LOCATION WITH PCB CONCENTRATIONS ≥ 1.0 MG/KG, BUT < 10.0 MG/KG
- SEDIMENT SAMPLE LOCATION
- POROUS MEDIA SAMPLE LOCATION
- W&S 2017 BORING/SOIL SAMPLE LOCATION
- W&S 2017 BORING/SOIL AND POROUS MEDIA SAMPLE LOCATION
- APPROXIMATE LIMIT OF HISTORICAL EXCAVATION
- W&S 2017 POROUS MEDIA/SEDIMENT SAMPLE. LEFT SIDE REPRESENTS POROUS MEDIA, RIGHT SIDE REPRESENTS SEDIMENT.

NOTES:

- SEE FIGURE 3 FOR NOTES, LEGEND AND LOCATION.
- SHADED DATA POINTS REPRESENT HISTORICAL SAMPLE POINTS AND/OR SAMPLE LOCATIONS OUTSIDE OF FIGURE'S AOC.
- HISTORICAL SAMPLE POINTS WHERE DETECTIONS/ EXCEEDANCES OCCURRED ARE HIGHLIGHTED. NO SAMPLE SYMBOL IS USED.

15 7.5 0 15 30
SCALE: 1"=15'

FIGURE 6-1

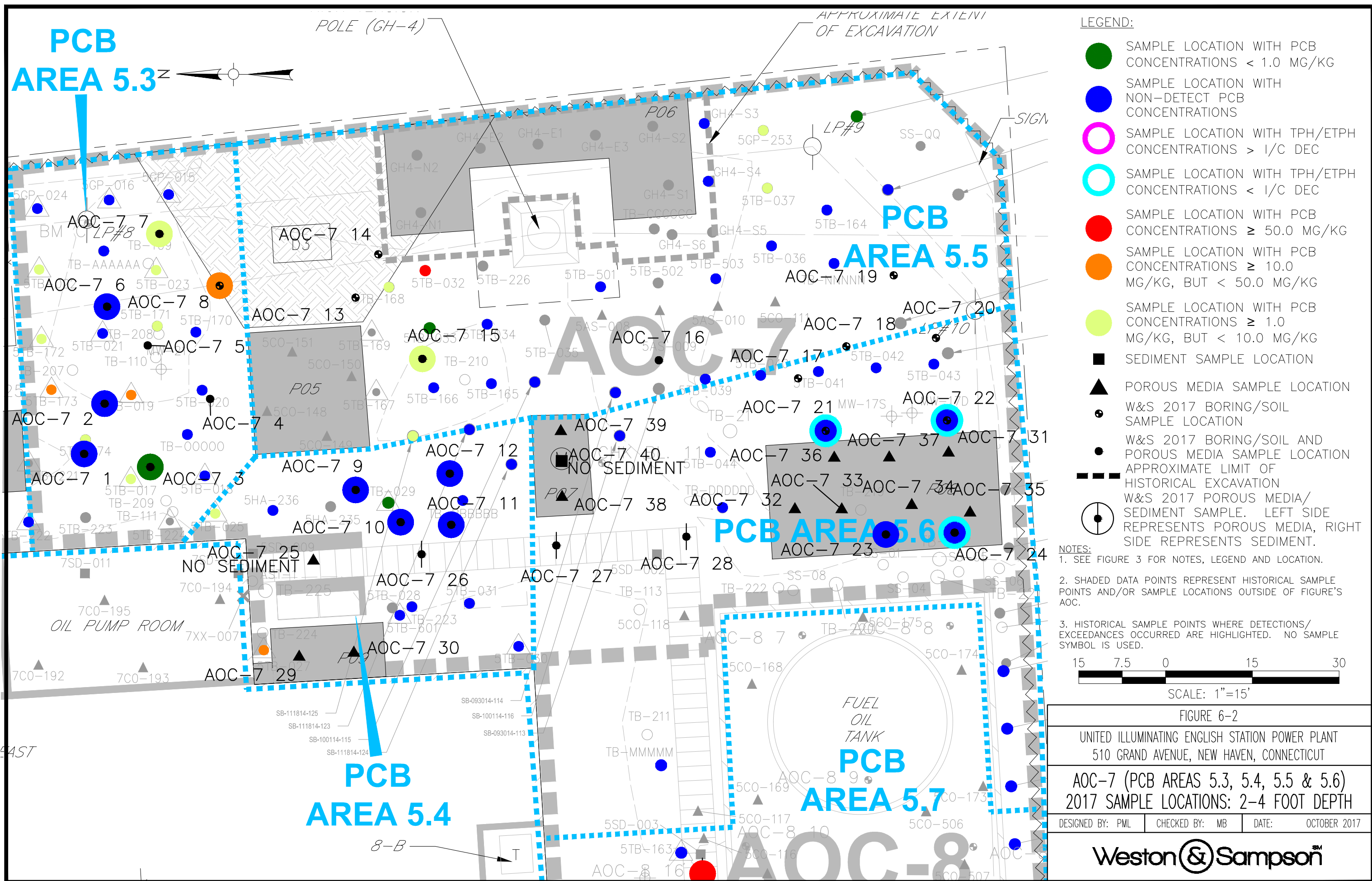
UNITED ILLUMINATING ENGLISH STATION POWER PLANT
510 GRAND AVENUE, NEW HAVEN, CONNECTICUT

AOC-7 (PCB AREAS 5.3, 5.4, 5.5 & 5.6)
2017 SAMPLE LOCATIONS: 0-2 FOOT DEPTH

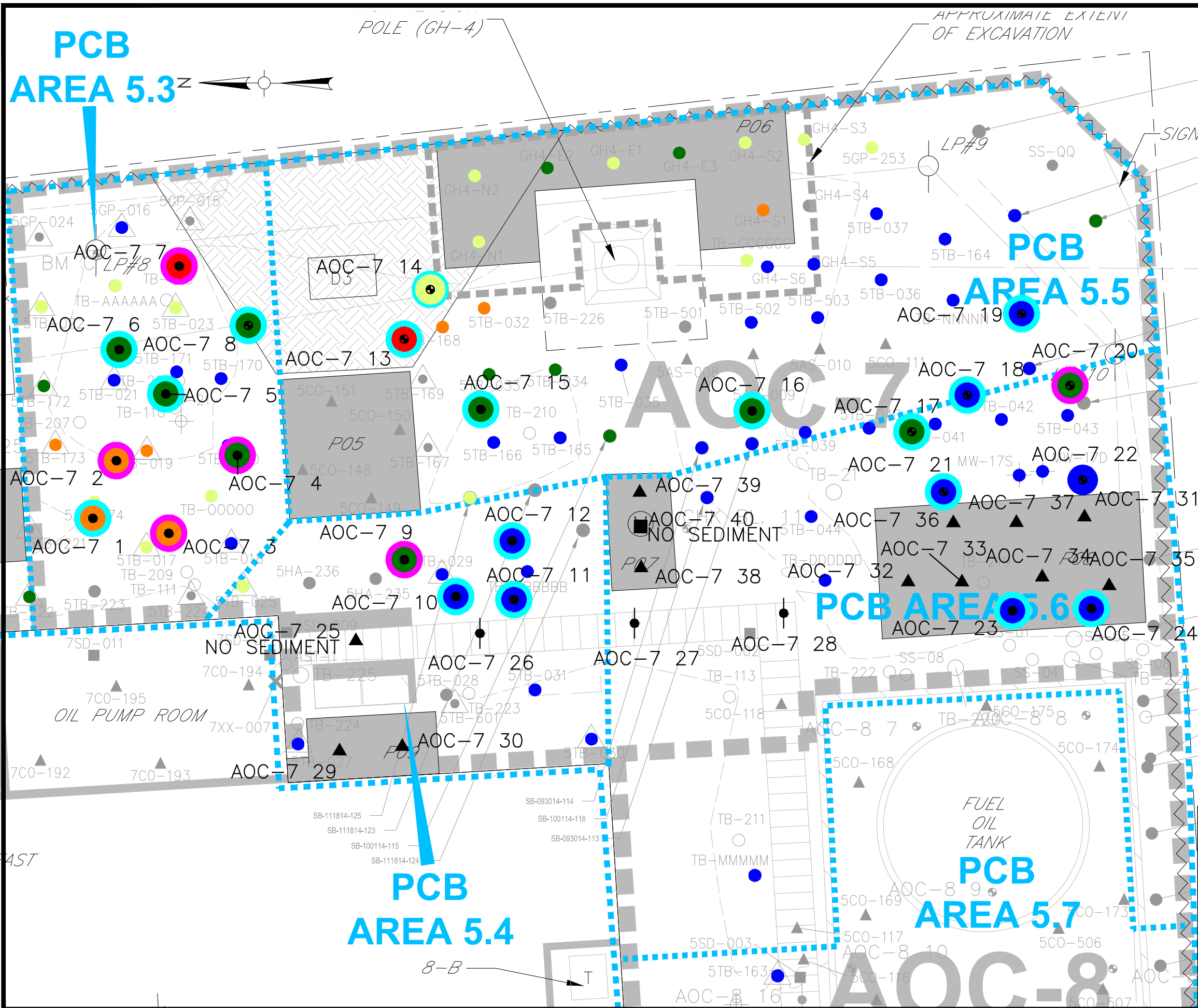
DESIGNED BY: PML	CHECKED BY: MB	DATE: OCTOBER 2017
------------------	----------------	--------------------

Weston & Sampson

\\wse03.local\WSE\Projects\CT\Rockyhill\OldServer\Avangrid\New Haven\English Station\CAD Files\Updated WSE Formatted Files\Southside Figures (with AOC-6, AOC-15) REV 11.20.17.dwg



\\wse03.local\Projects\WSE\RockyhillOldServer\Avangrid\New Haven\English Station\CAD Files\Updated WSE Formatted Files\Southside Figures (with AOC-6, AOC-15) REV 11.20.17.dwg



LEGEND:

- SAMPLE LOCATION WITH PCB CONCENTRATIONS < 1.0 MG/KG
- SAMPLE LOCATION WITH NON-DETECT PCB CONCENTRATIONS
- SAMPLE LOCATION WITH TPH/ETPH CONCENTRATIONS > 1/C DEC
- SAMPLE LOCATION WITH TPH/ETPH CONCENTRATIONS < 1/C DEC
- SAMPLE LOCATION WITH PCB CONCENTRATIONS ≥ 50.0 MG/KG
- SAMPLE LOCATION WITH PCB CONCENTRATIONS ≥ 10.0 MG/KG, BUT < 50.0 MG/KG
- SAMPLE LOCATION WITH PCB CONCENTRATIONS ≥ 1.0 MG/KG, BUT < 10.0 MG/KG
- SEDIMENT SAMPLE LOCATION
- POROUS MEDIA SAMPLE LOCATION
- W&S 2017 BORING/SOIL SAMPLE LOCATION
- W&S 2017 BORING/SOIL AND POROUS MEDIA SAMPLE LOCATION
- APPROXIMATE LIMIT OF HISTORICAL EXCAVATION
- W&S 2017 POROUS MEDIA/ SEDIMENT SAMPLE. LEFT SIDE REPRESENTS POROUS MEDIA, RIGHT SIDE REPRESENTS SEDIMENT.

- NOTES:
- SEE FIGURE 3 FOR NOTES, LEGEND AND LOCATION.
 - SHADED DATA POINTS REPRESENT HISTORICAL SAMPLE POINTS AND/OR SAMPLE LOCATIONS OUTSIDE OF FIGURE'S AOC.
 - HISTORICAL SAMPLE POINTS WHERE DETECTIONS/ EXCEEDANCES OCCURRED ARE HIGHLIGHTED. NO SAMPLE SYMBOL IS USED.



SCALE: 1"=15'

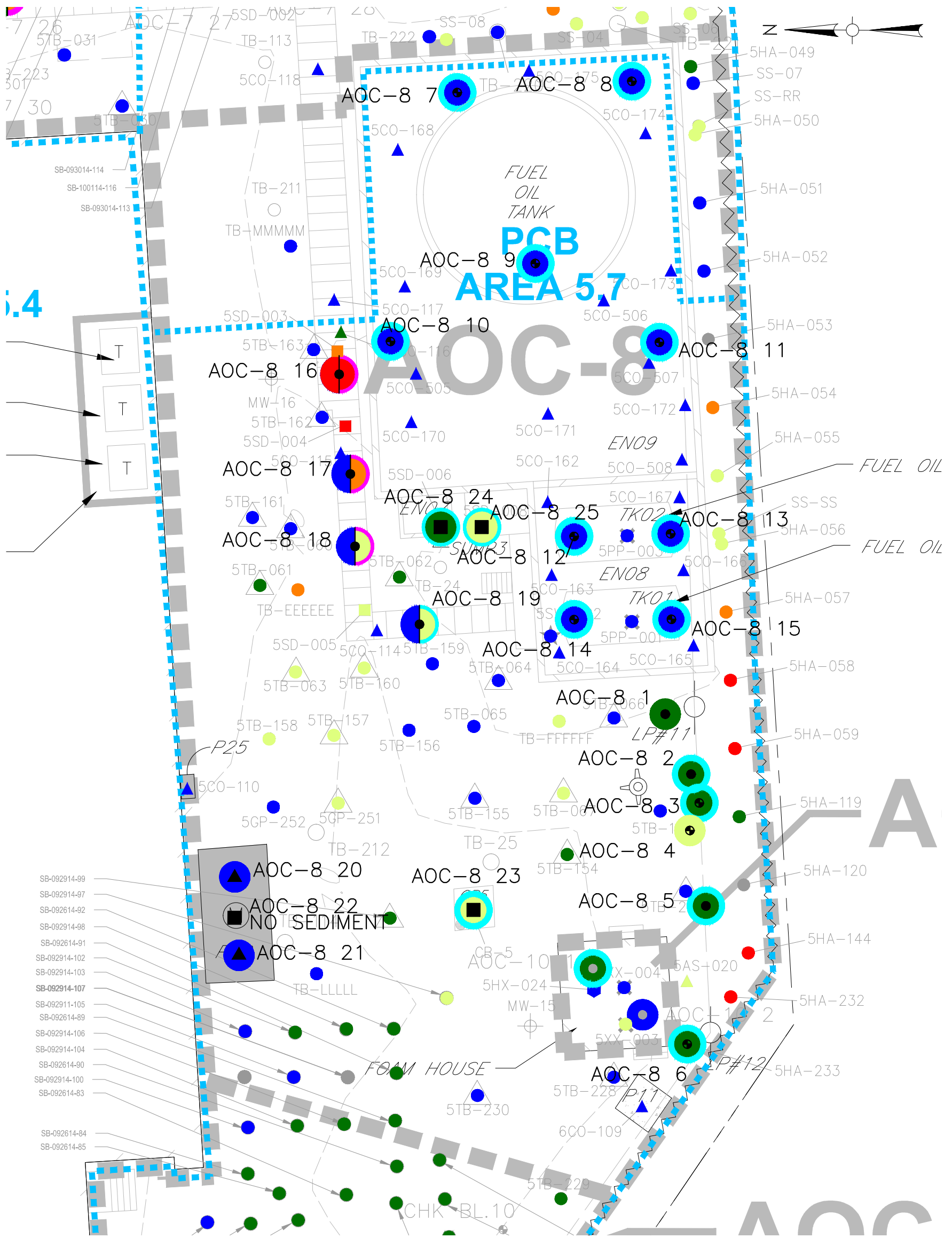
FIGURE 6-3

UNITED ILLUMINATING ENGLISH STATION POWER PLANT
510 GRAND AVENUE, NEW HAVEN, CONNECTICUT

AOC-7 (PCB AREAS 5.3, 5.4, 5.5 & 5.6)
2017 SAMPLE LOCATIONS: > 4 FOOT DEPTH

DESIGNED BY: PML CHECKED BY: MB DATE: OCTOBER 2017

Weston & SampsonSM



LEGEND:

