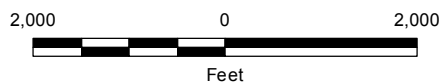


FIGURE 1
United Illuminating English Station Power Plant
510 Grand Avenue, New Haven, Connecticut

SITE LOCUS



\\\\wse03.local\\WSE\\Projects\\CT\\RockyHill\\Server\\Avangrid\\New Haven\\English Station\\CAD Files\\Updated WSE Formatted Files\\North and Southside Figures 2, 3 REV 12.22.17.dwg



NOTES:

1. REVISION 4 INCLUDES A PROPERTY LINE ADJUSTMENT BASED ON THE 11/28/16 SURVEY BY GODFREY-HOFFMAN & ASSOC.
2. ADAPTED FROM PLAN TITLED "SITE PLAN AND APPROXIMATE PARCEL BOUNDARIES" DATED 10/07/2016 BY TRC COMPANIES, INC..
3. AERIAL IMAGE FROM GOOGLE EARTH PRO, DATE OF IMAGE: 04/20/2016

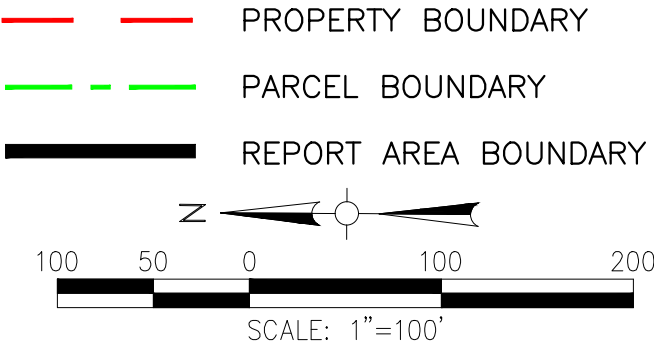
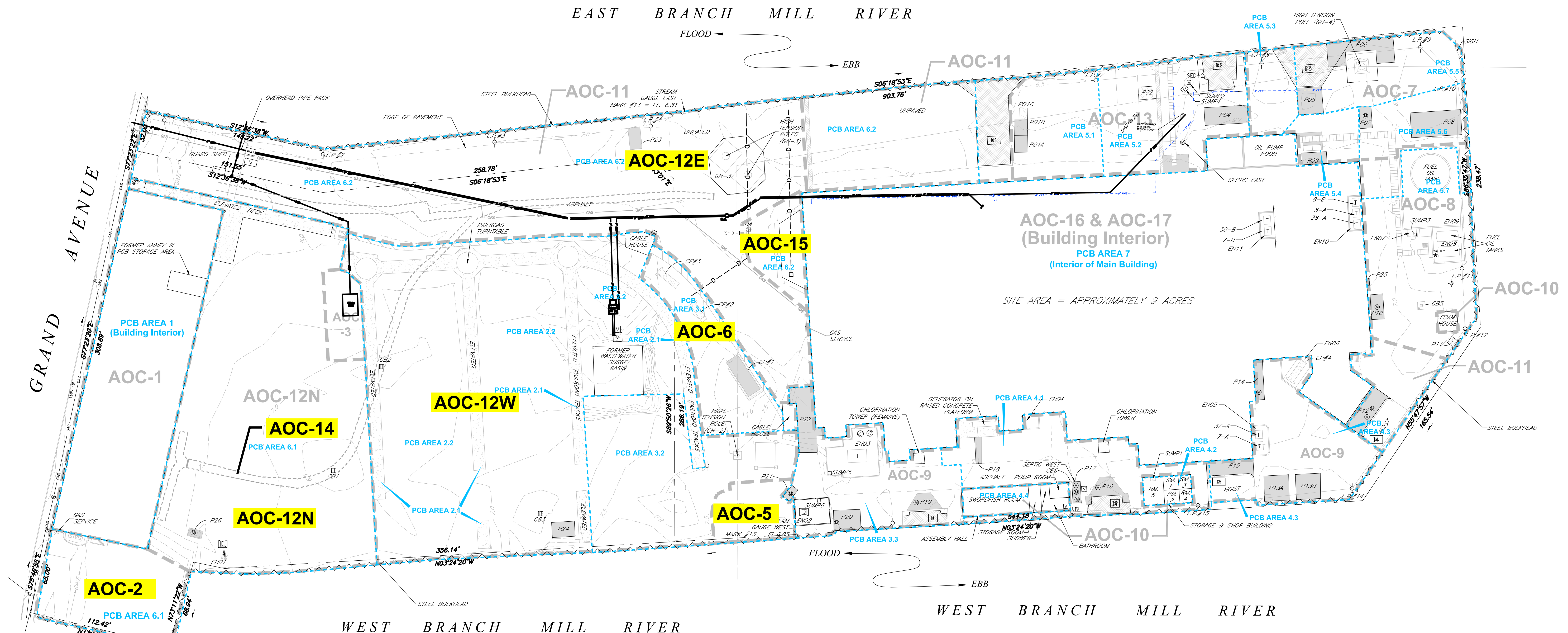
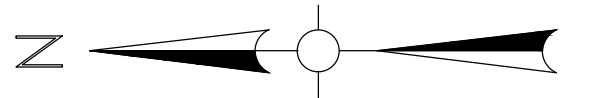


FIGURE 2		
UNITED ILLUMINATING ENGLISH STATION POWER PLANT 510 GRAND AVENUE, NEW HAVEN, CONNECTICUT		
SITE PLAN WITH PARCEL BOUNDARY		
DESIGNED BY: PML	CHECKED BY: MB	DATE: OCTOBER 2017
Weston & Sampson SM		



AREAS OF ENVIRONMENTAL CONCERN:

- AOC-1 STATION B-BUILDING INTERIOR
- AOC-2 STATION B UNDERGROUND STORAGE TANK AREA
- AOC-3 FORMER SEPTIC SYSTEM
- AOC-4 PAST SPILLS UNSPECIFIED LOCATIONS
- AOC-5 BULKHEAD PCB REMEDIATION AREA
- AOC-6 CAPACITOR RELEASE AREA/OUTDOOR CAPACITOR BANKS
- AOC-7 FORMER WASTE OIL AST AND OIL PUMP HOUSE
- AOC-8 FORMER FUEL OIL STORAGE ASTS
- AOC-9 TRANSFORMER AREAS
- AOC-10 INTERIOR CHEMICAL STORAGE AREAS EXCLUDING ENGLISH STATION
- AOC-11 ON-SITE FILL MATERIAL SITE WIDE
- AOC-12E COAL STORAGE, HANDLING, AND WASTE DISPOSAL AREAS
- AOC-12N COAL STORAGE, HANDLING, AND WASTE DISPOSAL AREAS
- AOC-12W COAL STORAGE, HANDLING, AND WASTE DISPOSAL AREAS
- AOC-13 FORMER WASTEWATER TREATMENT FACILITY
- AOC-14 FORMER COOLING WATER DISCHARGE TUNNEL
- AOC-15 CATCH BASIN RELEASE & OIL STAIN AREA
- AOC-16 ENGLISH STATION INTERIOR
- AOC-17 DRAINAGE STRUCTURES ASSOCIATED WITH/BENEATH ENGLISH STATION

GENERAL NOTES:

- ADAPTED FROM PLAN TITLED "SITE FEATURES, AOCs, AND PCB AREAS" DATED 10/07/2016 BY TRC COMPANIES INC..
- NOT ALL STRUCTURAL DETAILS HAVE BEEN SHOWN WITHIN BUILDINGS AND ENCLOSURES.
- ENCLOSURES EN01 THROUGH EN11 ARE ENCLOSED EITHER BY FOUR CONCRETE WALLS, OR BY THREE CONCRETE WALLS AND A BUILDING WALL. ENCLOSURE IS NOT SYNONYMOUS WITH CONTAINMENT.
- FOUR CONCRETE PADS FORMERLY HELD CAPACITORS: CP#1, CP#2, CP#3, CP#4. CP#1 IS AT GRADE; THE OTHERS ARE ELEVATED.
- IN A SURVEY OF MONITORING WELLS ON 13 APRIL 2004, AEI COULD NOT FIND THE FOLLOWING WELLS, AND THEY ARE PRESUMED EXCAVATED OR OTHERWISE DESTROYED: MW-01, MW-02, MW-13, MW-20, MW-N, AND MW-O.
- GODFREY-HOFFMAN ASSOCIATES, LLC SUPPLIED A GENERAL LOCATION SURVEY BASE MAP: PROJECT 01-182; JANUARY 4, 2002 WITH REVISIONS TO NOVEMBER 28, 2016; SCALE 1 INCH = 40 FEET.
- THIS FIGURE IS NOT INTENDED FOR CONSTRUCTION PURPOSES.

PCB INVESTIGATION AREAS:

- PCB AREA 1: STATION B INTERIOR
 - AREA 1.1 MEZZANINE AND FIRST FLOOR, EXCEPT ANNEX III
 - AREA 1.2 FORMER ANNEX III
 - AREA 1.3 BASEMENT
- PCB AREA 2: FORMER COAL YARD
 - AREA 2.1 ELEVATED RAILROAD TRACKS AND FOUNDATIONS
 - AREA 2.2 REMAINDER OF FORMER COAL YARD
- PCB AREA 3: ELECTRICAL INFRASTRUCTURE AND EXCAVATION
 - AREA 3.1 FORMER CAPACITOR AREA
 - AREA 3.2 UNITED ILLUMINATING REMEDIATION AREA
 - AREA 3.3 TRANSFORMER AND CAPACITOR AREA
- PCB AREA 4: SOUTHWEST CORNER
 - AREA 4.1 FORMER TRANSFORMER AREA
 - AREA 4.2 STORAGE AND SHOP BUILDING INTERIOR
 - AREA 4.3 TRANSFORMER AND FORMER CAPACITOR AREA
 - AREA 4.4 ASSEMBLY HALL INTERIOR
- PCB AREA 5: SOUTHEAST CORNER
 - AREA 5.1 FORMER DUMPSTER AREA
 - AREA 5.2 FORMER WASTEWATER TREATMENT AREA
 - AREA 5.3 OIL PUMP HOUSE AREA
 - AREA 5.4 FORMER WASTE OIL TANK AREA
 - AREA 5.5 TOWER GH-4 AREA
 - AREA 5.6 FORMER STORAGE BUILDING AREA
 - AREA 5.7 FUEL OIL TANK AREA
- PCB AREA 6: BALANCE OF SITE, EXCEPT ENGLISH STATION
 - AREA 6.1 FORMER STATION B AREA
 - AREA 6.2 MILL RIVER EAST BRANCH AREA
- PCB AREA 7: ENGLISH STATION INTERIOR

SITE FEATURE LEGEND

---	EDGE OF PAVEMENT	⬮	FIRE HYDRANT
---	PROPERTY / STREET LINE	⊙	MANHOLE
- x -	CHAIN LINK FENCE	⊞	VAULT
---	GUARDRAIL	⊞	HATCHWAY
---	NEW BULKHEAD	⊞	INTAKE CHANNEL
---	GAS LINE	⊞	DISCHARGE CHANNEL
---	OVERHEAD WIRE	⊞	TRANSFORMER
---	CONCRETE WALL	⊞	CIRCUIT BREAKER
---	APPROXIMATE EXTENT OF HISTORICAL EXCAVATION	⊞	CATHODIC BULKHEAD PROTECTION DEVICE
---	PCB AREA BOUNDARY	4AS-007	ASPHALT SAMPLE POINT
---	AOC BOUNDARY	300-040	CONCRETE SAMPLE POINT
---	PIPE TRENCH	CS-1A	CONCRETE SAMPLE POINT - COLLECTED BY GEI
---	EXISTING BUILDING	400-078	CONCRETE SAMPLE POINT FROM WALL
---	CONCRETE PAD	3HX-004	HEXANE WIPE SAMPLE POINT
---	CONCRETE PAD (ELEVATED)	40X-001	MISCELLANEOUS SAMPLE POINT
---	ASPHALT APRON	3SD-001	SEDIMENT SAMPLE POINT
---	RECENT FILL	PCB-005	SEDIMENT SAMPLE POINT - COLLECTED BY GEI
●	WATER GATE	4HA-513	SOIL SAMPLE POINT
●	GAS GATE	TB-K0K	SAMPLE LOCATION WHERE BOTH POROUS MEDIA (ASPHALT OR CONCRETE) AND SOIL SAMPLES WERE COLLECTED
●	ROUND CATCH BASIN	HA-10	SOIL SAMPLE POINT - COLLECTED BY OTHERS
⊞	RECTANGULAR CATCH BASIN	3SW-001	SURFACE WATER SAMPLE POINT
⊞	UTILITY POLE	MW-H	SOIL SAMPLE FROM GROUND WATER MONITORING WELL
		WB-W	SOIL SAMPLE FROM GROUND WATER MONITORING WELL - INSTALLED BY OTHERS



FIGURE 3
UNITED ILLUMINATING ENGLISH STATION POWER PLANT

510 GRAND AVENUE, NEW HAVEN, CONNECTICUT

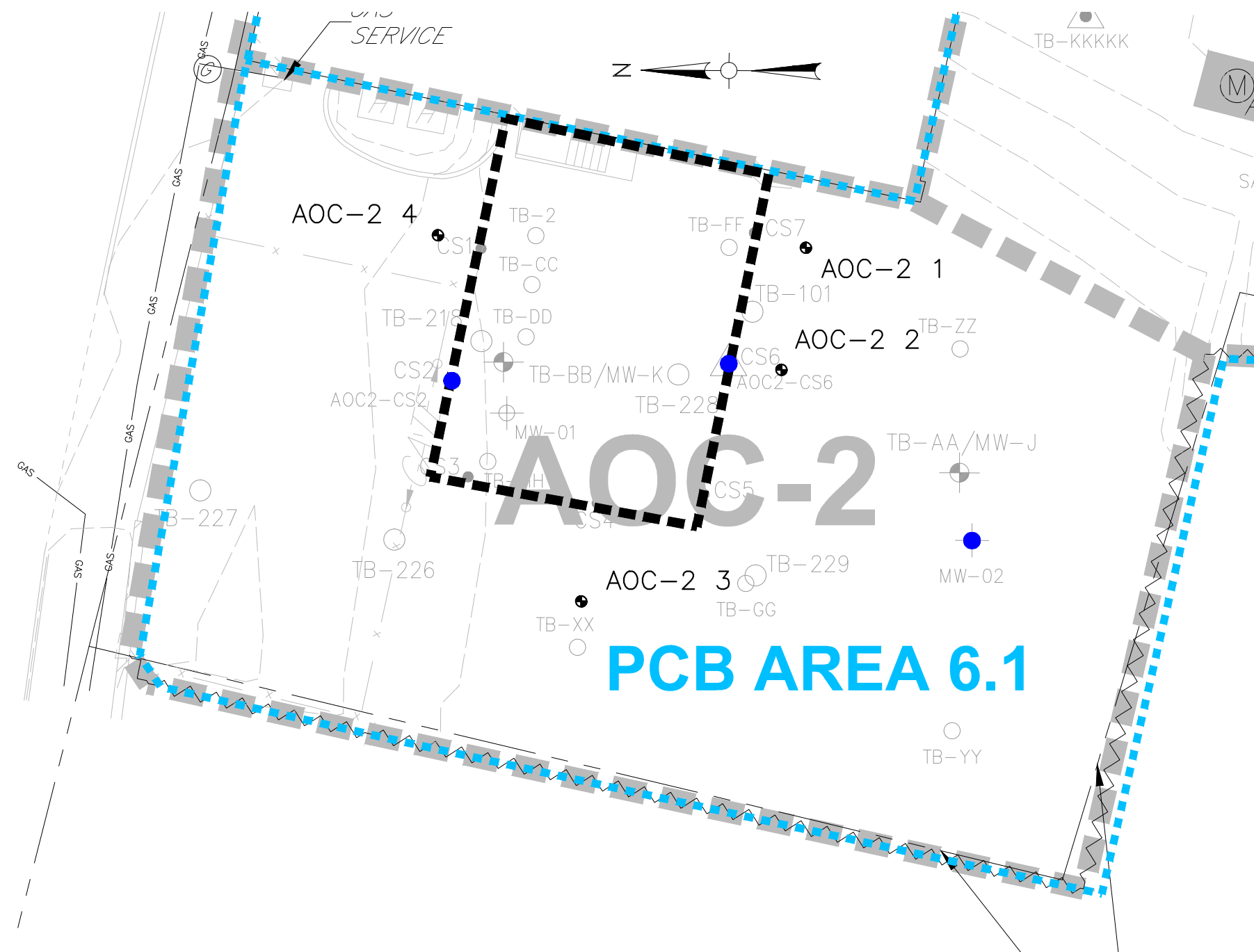
NORTH SIDE SITE FEATURES,
AOCs, AND PCB AREAS

OCTOBER, 2017




SCALE: 1" = 40'

Weston & Sampson

Weston & Sampson Engineers, Inc.
273 Dividend Road, Rocky Hill, CT 06067



LEGEND:

-  SAMPLE LOCATION WITH NON-DETECT PCB CONCENTRATIONS
 W&S 2017 BORING/SOIL SAMPLE LOCATION
 APPROXIMATE LIMIT OF HISTORICAL EXCAVATION

NOTES:

1. SEE FIGURE 3 FOR NOTES, LEGEND AND LOCATION.
2. SHADED DATA POINTS REPRESENT HISTORICAL SAMPLE POINTS AND/OR SAMPLE LOCATIONS OUTSIDE OF FIGURE'S AOC.



FIGURE 4-2

UNITED ILLUMINATING ENGLISH STATION POWER PLANT
510 GRAND AVENUE, NEW HAVEN, CONNECTICUT


AOC-2 (PCB AREA 6.1)
2017 SAMPLE LOCATIONS: 2-4 FOOT DEPTH

DESIGNED BY: PML	CHECKED BY: MB	DATE: OCTOBER 2017
------------------	----------------	--------------------

Weston & SampsonSM


15 7.5 0 15 30

SCALE: 1"=15'

FIGURE 5-1		
UNITED ILLUMINATING ENGLISH STATION POWER PLANT 510 GRAND AVENUE, NEW HAVEN, CONNECTICUT		
AOC-5		
2017 SAMPLE LOCATIONS: 0-2 FOOT DEPTH		
DESIGNED BY: PML	CHECKED BY: MB	DATE: OCTOBER 2017
		


15 7.5 0 15 30

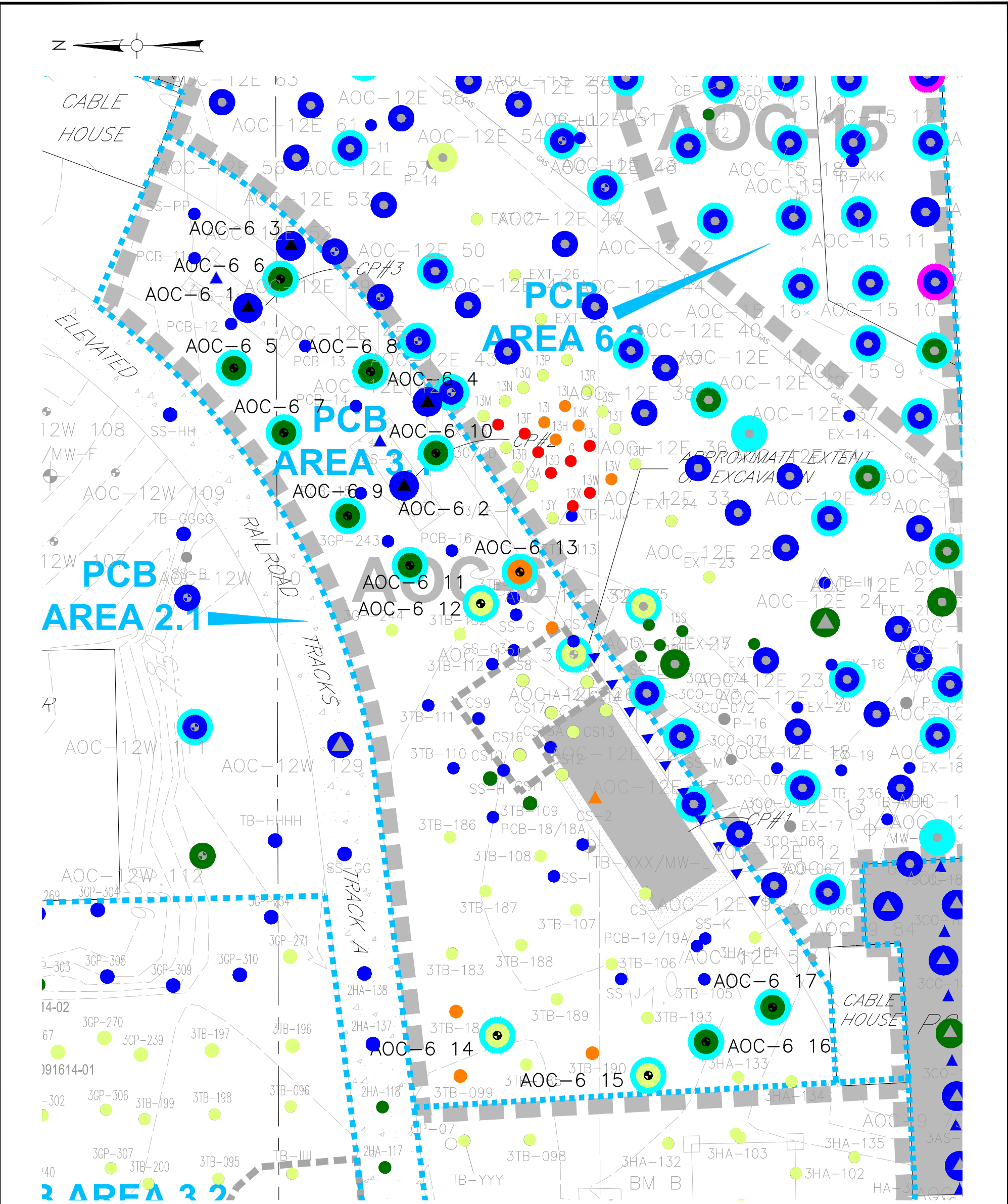
SCALE: 1"=15'

FIGURE 5-2		
UNITED ILLUMINATING ENGLISH STATION POWER PLANT 510 GRAND AVENUE, NEW HAVEN, CONNECTICUT		
AOC-5		
2017 SAMPLE LOCATIONS: 2-4 FOOT DEPTH		
DESIGNED BY: PML	CHECKED BY: MB	DATE: OCTOBER 2017
		

15 7.5 0 15 30

SCALE: 1"=15'

FIGURE 5-3		
UNITED ILLUMINATING ENGLISH STATION POWER PLANT 510 GRAND AVENUE, NEW HAVEN, CONNECTICUT		
AOC-5		
2017 SAMPLE LOCATIONS: > 4 FOOT DEPTH		
DESIGNED BY: PML	CHECKED BY: MB	DATE: OCTOBER 2017
		



LEGEND:

- SAMPLE LOCATION WITH PCB CONCENTRATIONS < 1.0 MG/KG
- SAMPLE LOCATION WITH NON-DETECT PCB CONCENTRATIONS
- SAMPLE LOCATION WITH TPH/ETPH CONCENTRATIONS > 1/C DEC
- SAMPLE LOCATION WITH TPH/ETPH CONCENTRATIONS < 1/C DEC
- SAMPLE LOCATION WITH PCB CONCENTRATIONS ≥ 50.0 MG/KG
- SAMPLE LOCATION WITH PCB CONCENTRATIONS ≥ 10.0 MG/KG, BUT < 50.0 MG/KG
- SAMPLE LOCATION WITH PCB CONCENTRATIONS ≥ 1.0 MG/KG, BUT < 10.0 MG/KG
- SEDIMENT SAMPLE LOCATION
- ▲

POROUS MEDIA SAMPLE LOCATION
- W&S 2017 BORING/SOIL SAMPLE LOCATION
- W&S 2017 BORING/SOIL AND POROUS MEDIA SAMPLE LOCATION
- APPROXIMATE LIMIT OF HISTORICAL EXCAVATION

- NOTES:
1. SEE FIGURE 3 FOR NOTES, LEGEND AND LOCATION.
2. SHADED DATA POINTS REPRESENT HISTORICAL SAMPLE POINTS AND/OR SAMPLE LOCATIONS OUTSIDE OF FIGURE'S AOC.
3. HISTORICAL SAMPLE POINTS WHERE DETECTIONS/ EXCEEDANCES OCCURRED ARE HIGHLIGHTED. NO SAMPLE SYMBOL IS USED.

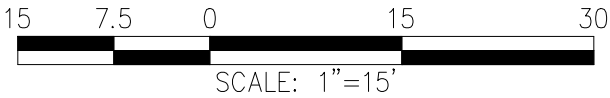


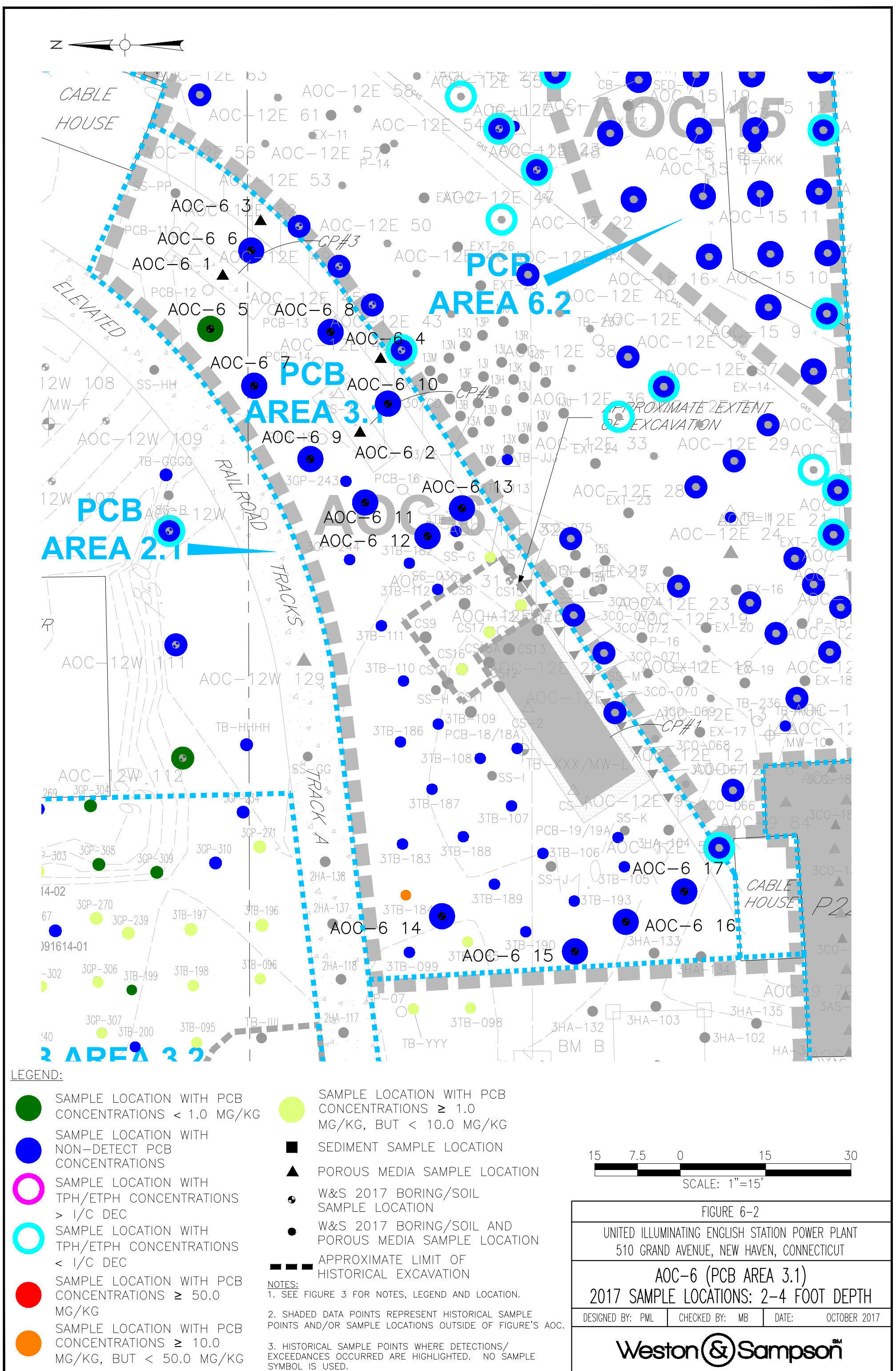
FIGURE 6-1

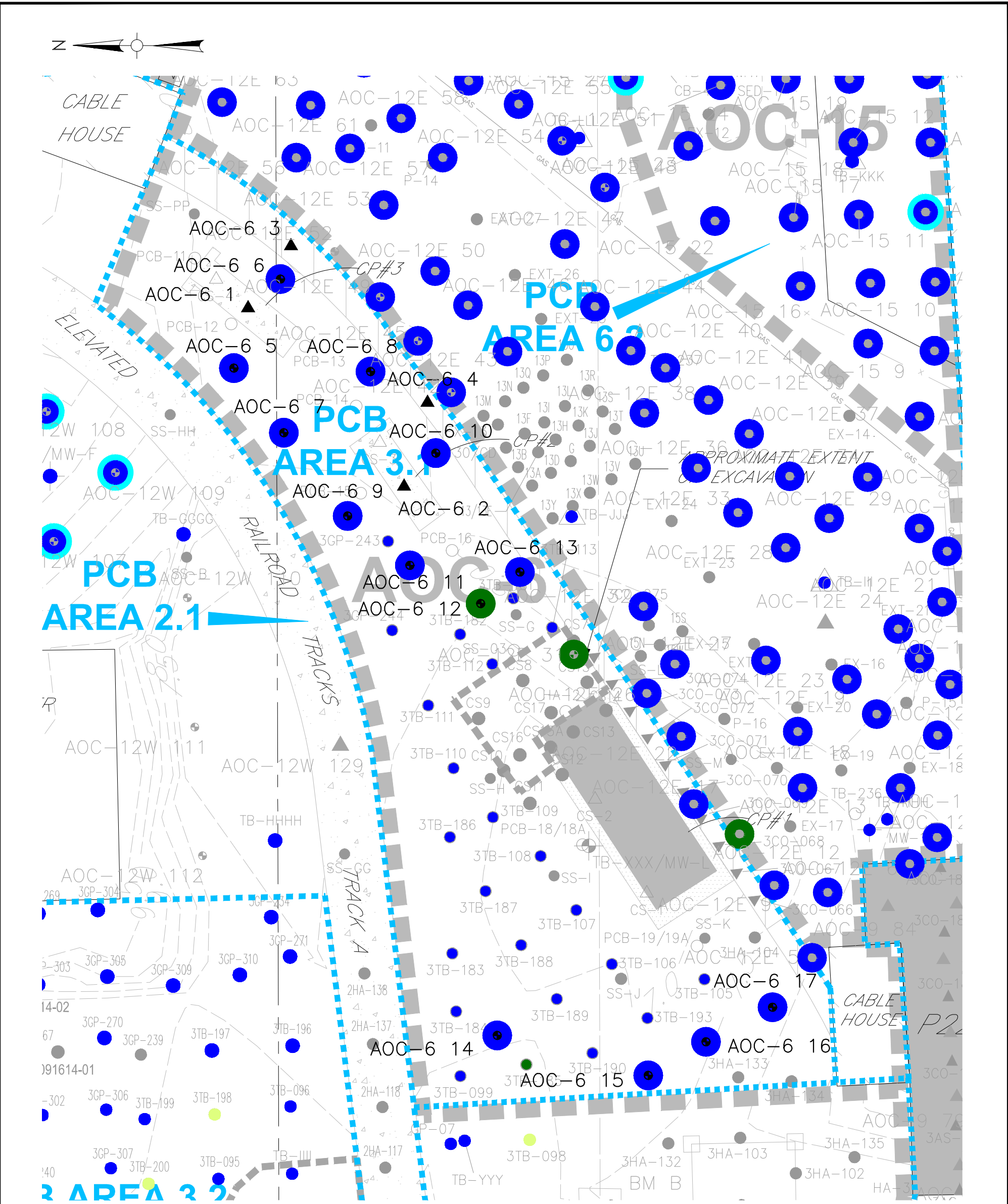
UNITED ILLUMINATING ENGLISH STATION POWER PLANT
510 GRAND AVENUE, NEW HAVEN, CONNECTICUT

AOC-6 (PCB AREA 3.1)
2017 SAMPLE LOCATIONS: 0-2 FOOT DEPTH

DESIGNED BY: PML CHECKED BY: MB DATE: OCTOBER 2017

Weston & SampsonSM





LEGEND:

- SAMPLE LOCATION WITH PCB CONCENTRATIONS < 1.0 MG/KG
- SAMPLE LOCATION WITH NON-DETECT PCB CONCENTRATIONS
- SAMPLE LOCATION WITH TPH/ETPH CONCENTRATIONS > 1/C DEC
- SAMPLE LOCATION WITH TPH/ETPH CONCENTRATIONS < 1/C DEC
- SAMPLE LOCATION WITH PCB CONCENTRATIONS ≥ 50.0 MG/KG
- SAMPLE LOCATION WITH PCB CONCENTRATIONS ≥ 10.0 MG/KG, BUT < 50.0 MG/KG
- SAMPLE LOCATION WITH PCB CONCENTRATIONS ≥ 1.0 MG/KG, BUT < 10.0 MG/KG
- SEDIMENT SAMPLE LOCATION
- ▲

POROUS MEDIA SAMPLE LOCATION
- W&S 2017 BORING/SOIL SAMPLE LOCATION
- W&S 2017 BORING/SOIL AND POROUS MEDIA SAMPLE LOCATION
- APPROXIMATE LIMIT OF HISTORICAL EXCAVATION
- NOTES:

1. SEE FIGURE 3 FOR NOTES, LEGEND AND LOCATION.

2. SHADED DATA POINTS REPRESENT HISTORICAL SAMPLE POINTS AND/OR SAMPLE LOCATIONS OUTSIDE OF FIGURE'S AOC.

3. HISTORICAL SAMPLE POINTS WHERE DETECTIONS/ EXCEEDANCES OCCURRED ARE HIGHLIGHTED. NO SAMPLE SYMBOL IS USED.

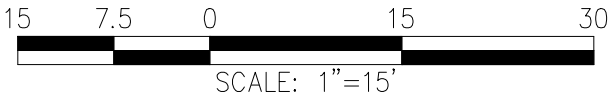


FIGURE 6-3

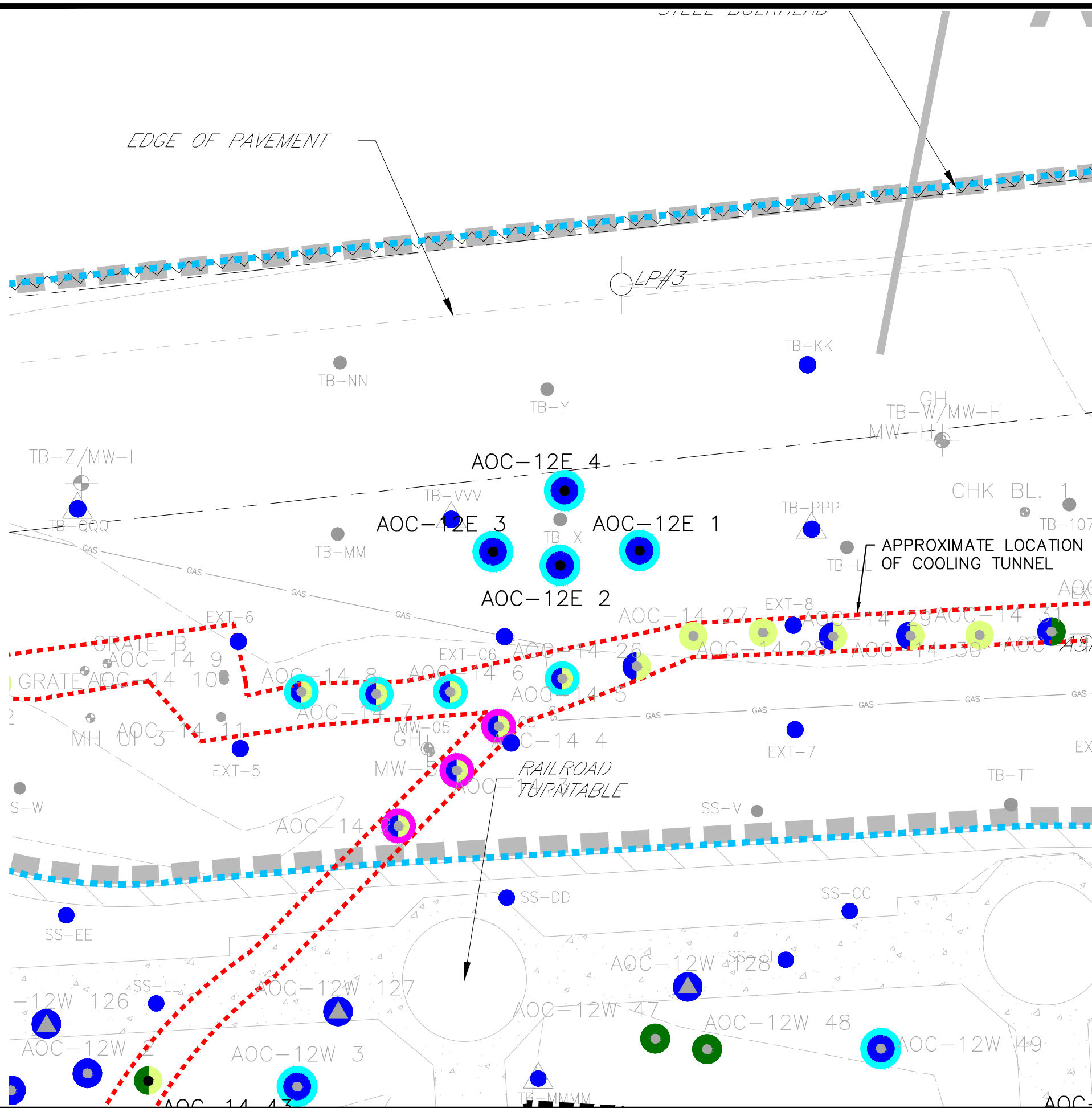
UNITED ILLUMINATING ENGLISH STATION POWER PLANT
510 GRAND AVENUE, NEW HAVEN, CONNECTICUT

AOC-6 (PCB AREA 3.1)
2017 SAMPLE LOCATIONS: > 4 FOOT DEPTH

DESIGNED BY: PML CHECKED BY: MB DATE: OCTOBER 2017

Weston & SampsonSM

\\wse03.local\Projects\WSE\Projects\CT\RockyHill\Server\Avangrid\New Haven\English Station\CAD Files\Updated WSE Formatted Files\Northside Figures (AOCs 5, 12E, 12W) REV 11.07.17.dwg



- LEGEND:
- SAMPLE LOCATION WITH PCB CONCENTRATIONS < 1.0 MG/KG
 - SAMPLE LOCATION WITH NON-DETECT PCB CONCENTRATIONS
 - SAMPLE LOCATION WITH TPH/ETPH CONCENTRATIONS > 1/C DEC
 - SAMPLE LOCATION WITH TPH/ETPH CONCENTRATIONS < 1/C DEC
 - SAMPLE LOCATION WITH PCB CONCENTRATIONS ≥ 50.0 MG/KG
 - SAMPLE LOCATION WITH PCB CONCENTRATIONS ≥ 10.0 MG/KG, BUT < 50.0 MG/KG
 - SAMPLE LOCATION WITH PCB CONCENTRATIONS ≥ 1.0 MG/KG, BUT < 10.0 MG/KG
 - SEDIMENT SAMPLE LOCATION
 - POROUS MEDIA SAMPLE LOCATION
 - W&S 2017 BORING/SOIL SAMPLE LOCATION
 - W&S 2017 BORING/SOIL AND POROUS MEDIA SAMPLE LOCATION
 - APPROXIMATE LIMIT OF HISTORICAL EXCAVATION

NOTES:

1. SEE FIGURE 3 FOR NOTES, LEGEND AND LOCATION.

2. SHADED DATA POINTS REPRESENT HISTORICAL SAMPLE POINTS AND/OR SAMPLE LOCATIONS OUTSIDE OF FIGURE'S AOC.

3. HISTORICAL SAMPLE POINTS WHERE DETECTIONS/ EXCEEDANCES OCCURRED ARE HIGHLIGHTED. NO SAMPLE SYMBOL IS USED.

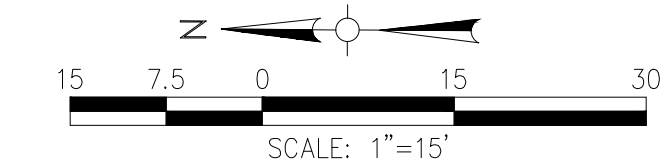


FIGURE 7A-1

UNITED ILLUMINATING ENGLISH STATION POWER PLANT
510 GRAND AVENUE, NEW HAVEN, CONNECTICUT

AOC-12E (PCB AREA 6.2)
2017 SAMPLE LOCATIONS: 0-2 FOOT DEPTH

DESIGNED BY: PML CHECKED BY: MB DATE: OCTOBER 2017

Weston & SampsonSM